

LEIPZIG INTERVENTIONAL COURSE

LINC

The graphic features a dark navy blue background. A large, light blue, textured brushstroke curves diagonally from the bottom left towards the top right. Overlaid on this is a smaller, vibrant brushstroke with a gradient from red to orange, also following a similar diagonal path. The letters 'LINC' are centered in a white, clean, sans-serif font, positioned over the intersection of the two brushstrokes.



The Angiosome Concept: How to Connect the Right Arterial Segments?

Peter A. Schneider, MD

Division of Vascular Therapy
Hawaii Permanente Medical Group
Honolulu, Hawaii



Disclosure

Peter A. Schneider

I have the following disclosures:

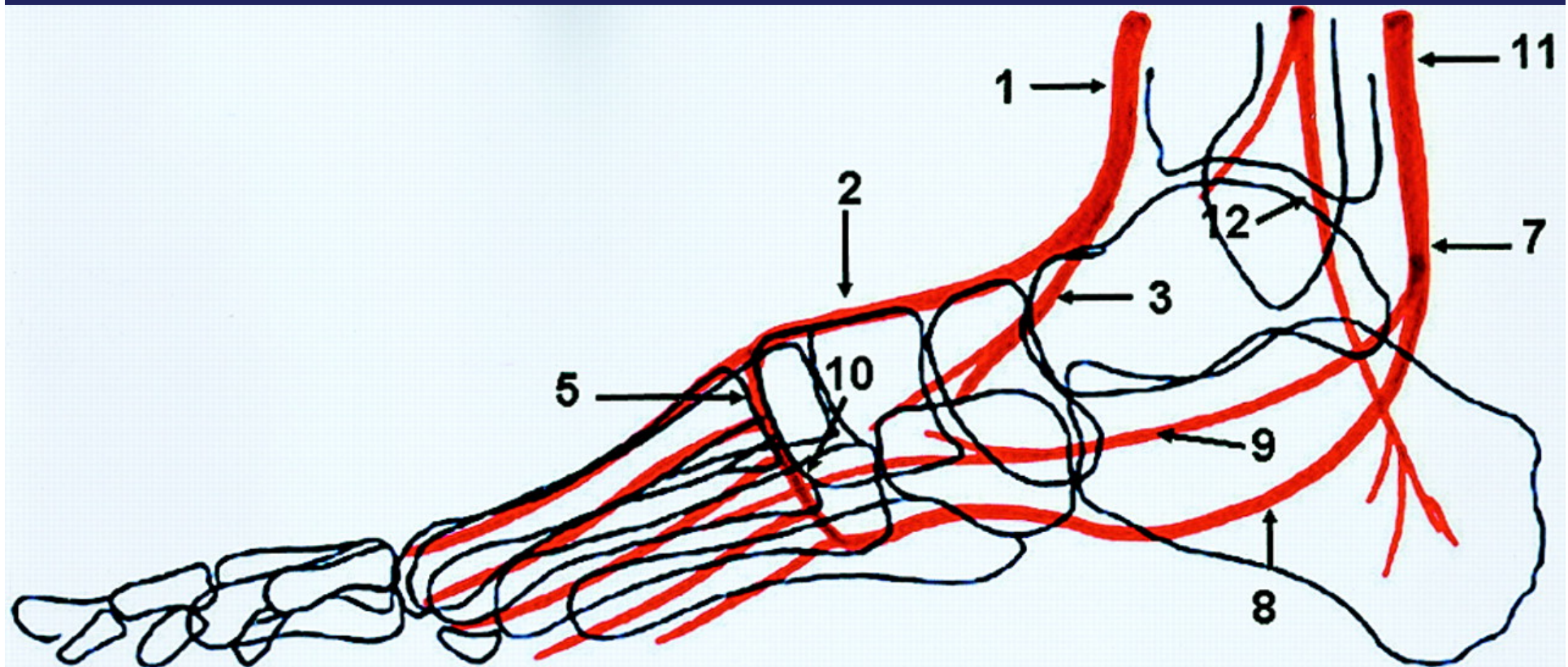
- X Scientific Advisory Board: AbbottVascular, Medtronic
- X Royalties: Cook
- X Educational programs: Medtronic, Gore, Cook, Terumo
- X Steering Committee for VIVA
- X Enroll in clinical studies with sponsors: Cordis, Abbott, Gore

Old Teachings

- “Must establish in-line flow to the foot”
 - Typically with bypass, we are looking for the best quality target blood vessel to work with.

Limb Amputation or Clinical Failure Despite a Patent Bypass

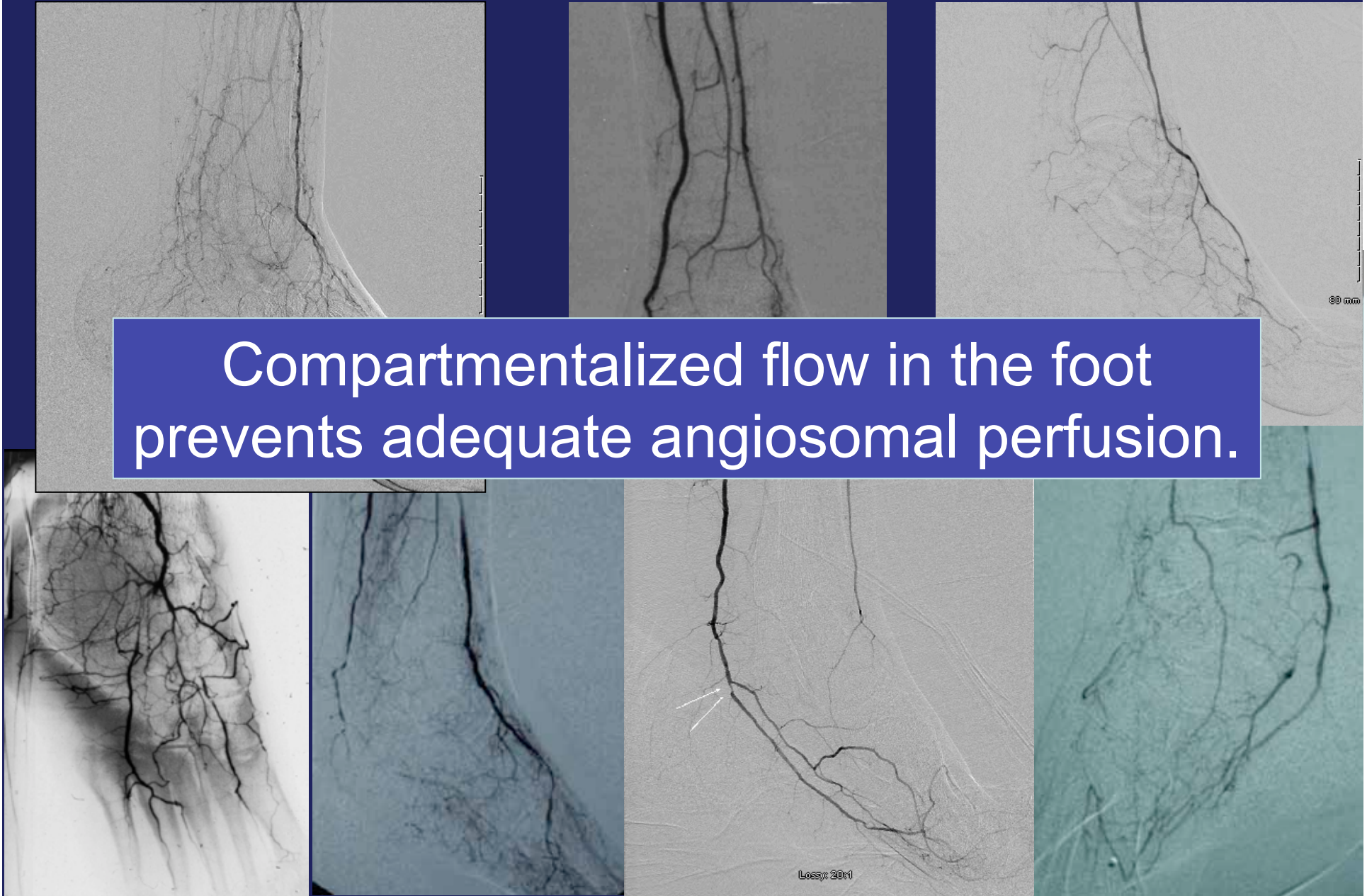
Study	CLI Patients	Results
Goodney et al Ann Vasc Surg 2010;24:59	2306 bypass	8% amputation at one year, 17% of these had a patent bypass
Simons et al. J Vasc Surg 2010;51:1419	1012 bypass	10% of those with a patent graft had no clinical improvement
Taylor et al J Vasc Surg 2009;50:534	361 bypass 316 PTA	Survival, limb salvage, and ambulation for one year: 37% for PTA and 44% for bypass



A fully intact pedal arch is rare in diabetics.

Pedal Flow in Diabetic CLI

Compartmentalized flow in the foot prevents adequate angiosomal perfusion.



Angiosomes of the Foot and Ankle

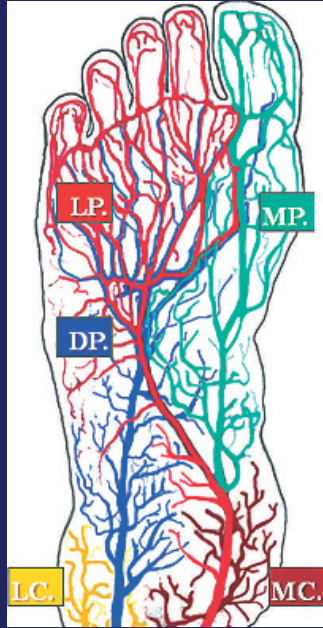


Targeted tibial revascularization

- Opportunity to match the treatment to the clinical syndrome (Analogous to coronary bed)
- Why not achieve best possible perfusion to the tissue in need?



Opportunity for targeted therapy

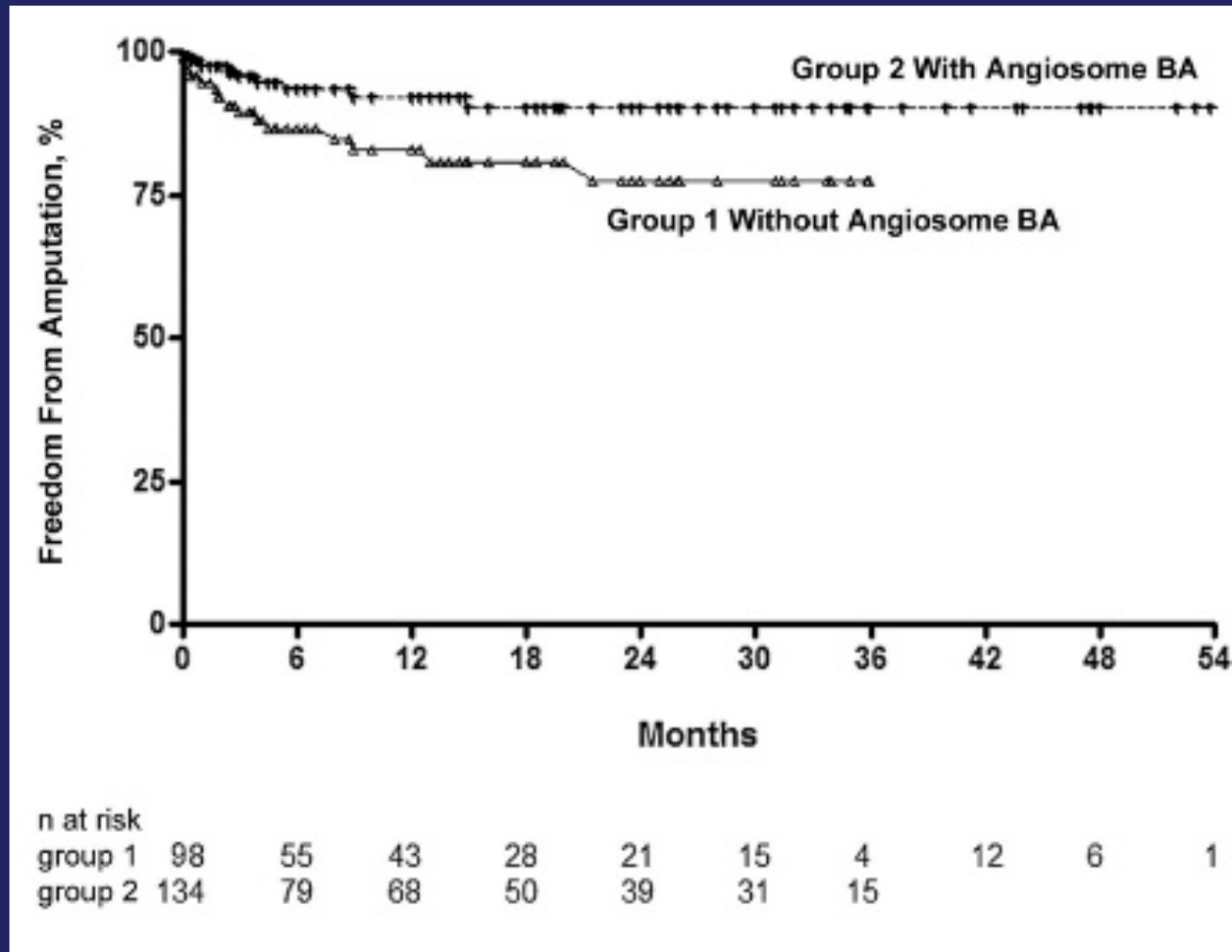


Strategy for BTK Angioplasty Angiosomal Perfusion Matters

Method of Revasc	Appropriate Angiosome Treated	Boundary Angiosome Treated
PTA Alexandrescu et al. J Endovasc Ther 2008;15:580	83% healed	59% healed
Bypass Neville et al. Ann Vasc Surg 2009;23:367	91% healed	62% healed

Angiosome Concept

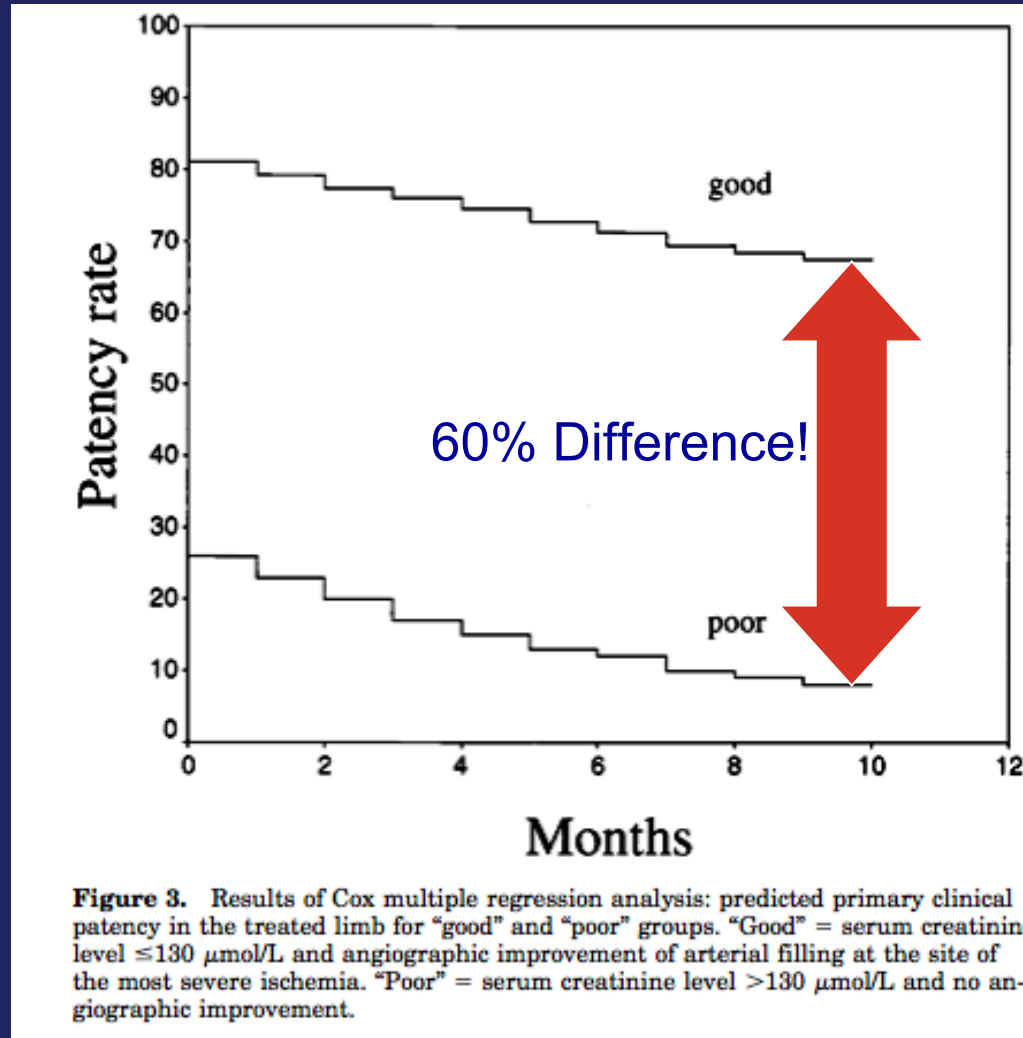
Comparison of BTK Angioplasty in Diabetics With and Without Use of the Angiosome Concept



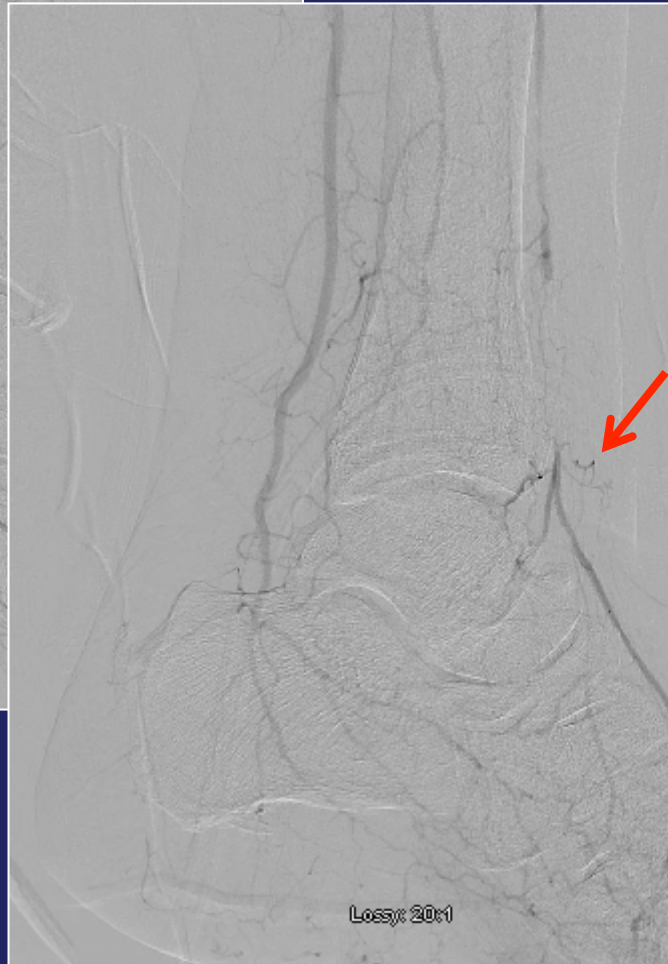
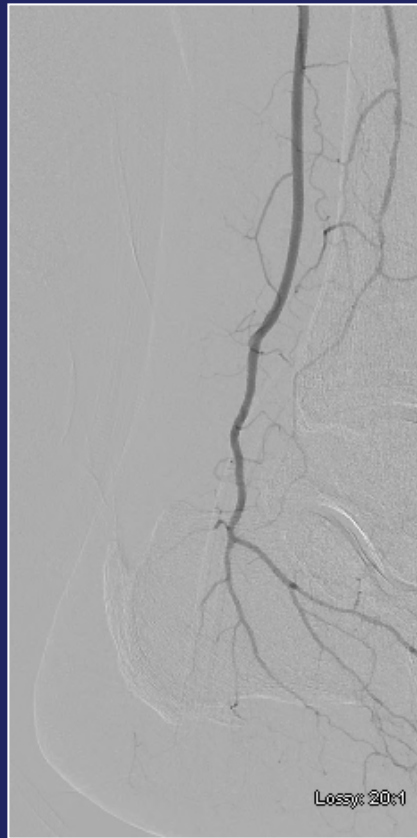
Alexandrescu et al. J Endovasc Ther 2011;18:376

Angiosome Concept

Composite of renal failure and angiosomal perfusion



Exploit the Advantages of Endovascular Therapy



SA 4
ries: 27

Right

S/P Laser Atherectomy
S/P PTA
Completion

Pre Intervention

50 mm

50 mm

Lossy: 20:1

When is Angiosome concept less important?

- Non-diabetics
- Rest pain (Rutherford 4), no tissue loss
- Lesion above the ankle
- Superficial ulceration (<10mm in diameter), esp. if toe pressure ≥ 50 mmHg after PTA
- Fully intact pedal arch



Angiosomal Variability



Medial plantar artery



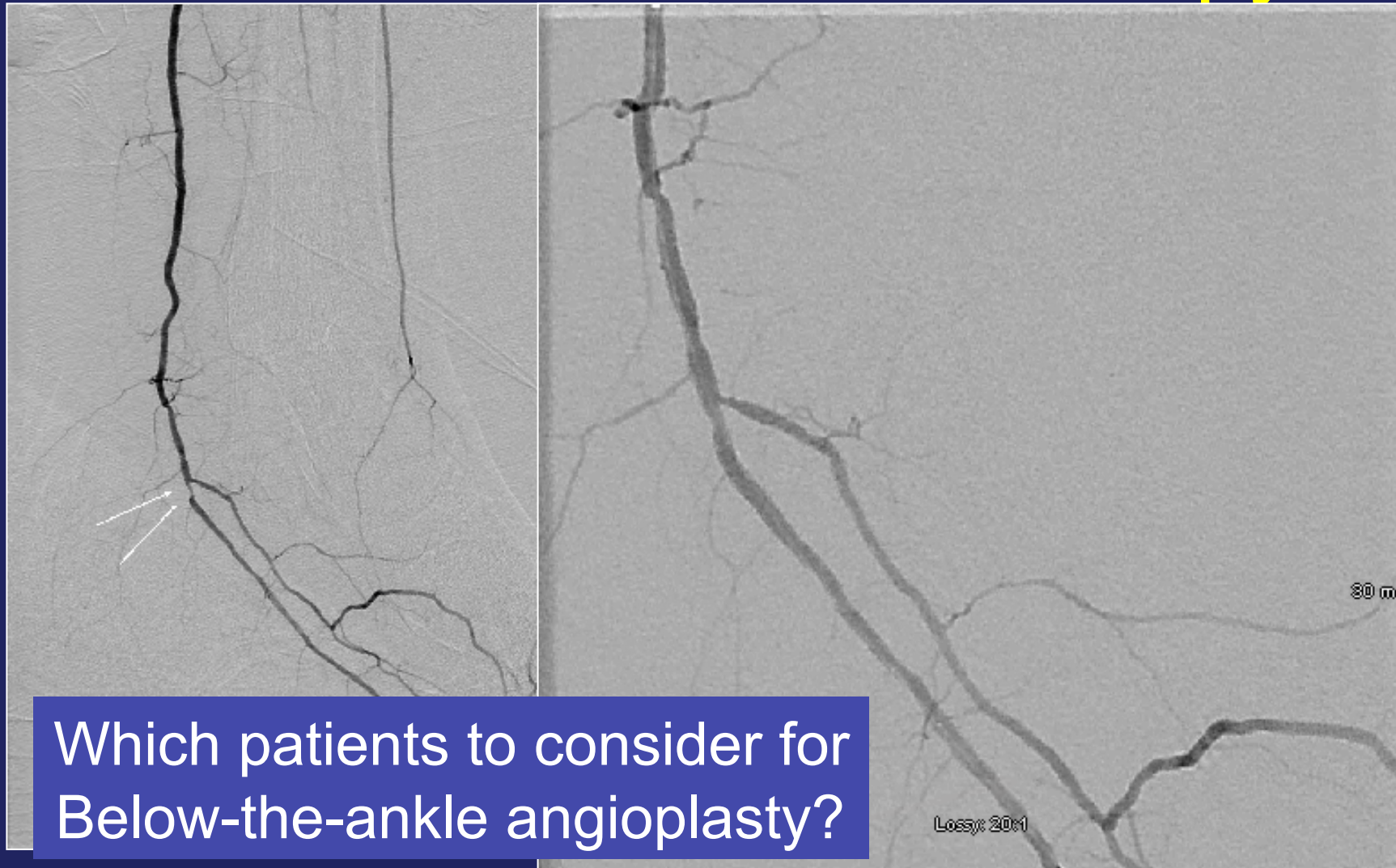
Attinger. Plast Reconstr Surg 2006;117:261

Angiosome Concept Need More Understanding

- Angiosomal variability.
- Differences in collateralization
 - Example: variable affect peroneal artery revasc
- When to revasc a boundary angiosome.
- Match angiosomal revascularization to tissue perfusion

Angiosome Concept

How Can It Guide Therapy?



Angiosome Concept

How Can It Guide Therapy?





Angiosome Concept Conclusions

- Helps to explain some of the variability in results of revascularization for CLI.
 - Especially in diabetics
- Healing is more likely after direct revasc of the correct angiosome.
- An opportunity for targeted therapy.
- May help determine best strategy in some subgroups of patients.